

861

CALIFORNIA



Backing:	SBR
Pile Material:	/ 60% Polyester
Manufacturing Method:	Knitting
Total Height:	15 mm
Pile Height:	3 mm
Mat Dimensions:	50x78 cm/ 58x90 cm
Slip Sensitivity Topside:	Ja
Washable At:	30 °C
Country of Origin:	China
Tariff Code:	57050030



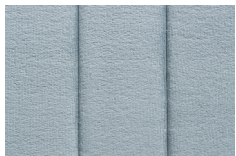
OEKO-TEX®
INSPIRING CONFIDENCE



AVAILABLE IN:



Available as:	Mats
Color:	007 Anthracite
Mat Dimensions:	50x78 cm, 58x90 cm



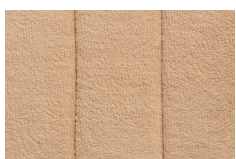
Available as:	Mats
Color:	010 Blue
Mat Dimensions:	50x78 cm, 58x90 cm



Available as:	Mats
Color:	032 Creme
Mat Dimensions:	50x78 cm, 58x90 cm



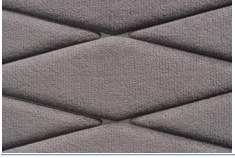
Available as:	Mats
Color:	014 Grey
Mat Dimensions:	50x78 cm, 58x90 cm



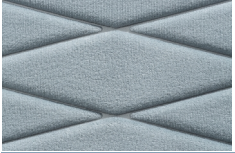
Available as:	Mats
Color:	070 Taupe
Mat Dimensions:	50x78 cm, 58x90 cm

861

CALIFORNIA



Available as: Mats
Color: 107 Anthracite
Mat Dimensions: 50x78 cm, 58x90 cm



Available as: Mats
Color: 110 Blue
Mat Dimensions: 50x78 cm, 58x90 cm



Available as: Mats
Color: 132 Creme
Mat Dimensions: 50x78 cm, 58x90 cm



Available as: Mats
Color: 114 Grey
Mat Dimensions: 50x78 cm, 58x90 cm



Available as: Mats
Color: 170 Taupe
Mat Dimensions: 50x78 cm, 58x90 cm

Due to production techniques, colors may vary. Weight and size indications are always approximate.

[View Online](#)