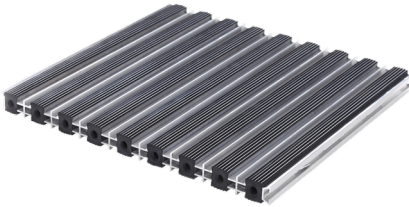


398 PROFI DUO



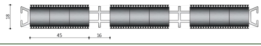
Manufacturing Method: Vulcanization
Backing: None
Pile Material: 100% Rubber
Base Material Composition: 100% Aluminum
Fire Class: Dfl - S1
Finishing: No finishing
Country of Origin: Netherlands
Tariff Code: 39189000



AVAILABLE IN:

	Description:	Profi Duo Single 12mm Black SSP
	Description:	Profi Duo Single 12mm Grey SSP
	Description:	Profi Duo Double 12mm Black SSP
	Description:	Profi Duo Double 12mm Grey SSP
	Description:	Profi Duo Triple 12mm Black SSP
	Description:	Profi Duo Triple 12mm Grey SSP
	Description:	Profi Duo Single 18mm Black SSP
	Description:	Profi Duo Single 18mm Grey SSP
	Description:	Profi Duo Double 18mm Black SSP
	Description:	Profi Duo Double 18mm Grey SSP
	Description:	Profi Duo Triple 18mm Black SSP

398

PROFI DUO**Description:**

Profi Duo Triple 18mm Grey SSP

Due to production techniques, colors may vary. Weight and size indications are always approximate.

[View Online](#)**Hamat B.V.**

Spoelstraat 16 8281 JT Genemuiden
The Netherlands
sales@hamat.com

Hamat B.V. certifies the supplied products to meet the requirements as specified and stated in the last editions of the technical information. The products have been produced and tested according procedures agreed in our quality system. The tests have been carried out according to the prescribed standards.