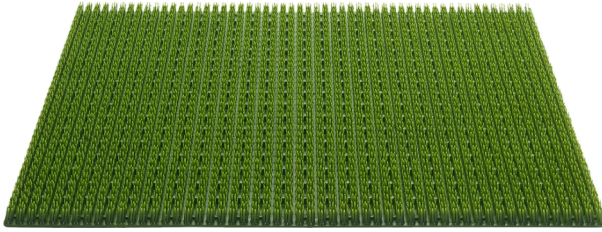


405 CONDOR



Manufacturing Method:	Injection molding
Indoor / Outdoor Use:	Outside
Backing:	None
Pile Material:	100% Polyethylene
Total Height:	18 mm
Mat Dimensions:	40x60 cm
Country of Origin:	Belgium
Tariff Code:	39189000



outdoor
use

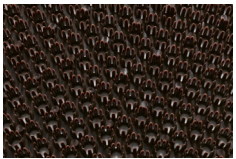


scrape
effect

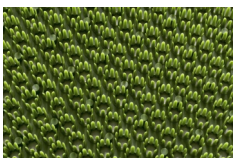
AVAILABLE IN:



Available as:	Mats
Color:	007 Anthracite
Mat Dimensions:	40x60 cm



Available as:	Mats
Color:	006 Dark Brown
Mat Dimensions:	40x60 cm



Available as:	Mats
Color:	004 Green
Mat Dimensions:	40x60 cm

Due to production techniques, colors may vary. Weight and size indications are always approximate.

[View Online](#)