

559

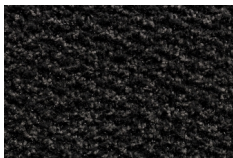
UNIVERSAL



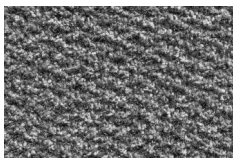
Manufacturing Method:	Tufted
Backing:	Vinyl
Pile Material:	15% Polyscraper / 85% Polypropylene
Total Weight:	2810 g/m ²
Pile Weight:	710 g/m ²
Total Height:	8 mm
Pile Height:	7 mm
Mat Dimensions:	40x60 cm/ 60x80 cm
Available Roll Widths:	200 cm
Roll Length:	20 m1
Use Class:	22 - Normal residential use
Fire Class:	Efl
Anti-Slip Bottom:	Yes
Country of Origin:	Netherlands
Tariff Code:	57033919 / 57049000

indoor
usedirt
intakewater
absorptionscrape
effect

AVAILABLE IN:



Available as:	Mats / Roll
Color:	052 Graphite
Mat Dimensions:	40x60 cm, 60x80 cm
Available Roll Widths:	200 cm
Roll Length:	20 m1



Available as:	Mats / Roll
Color:	014 Grey
Mat Dimensions:	40x60 cm, 60x80 cm
Available Roll Widths:	200 cm
Roll Length:	20 m1



Available as:	Mats / Roll
Color:	070 Taupe
Mat Dimensions:	40x60 cm, 60x80 cm
Available Roll Widths:	200 cm
Roll Length:	20 m1

559 UNIVERSAL

Due to production techniques, colors may vary. Weight and size indications are always approximate.

[View Online](#)